

NELSON MANDELA
UNIVERSITY

A photograph of a young woman in a graduation cap and gown, smiling and holding a rolled-up diploma. The image is overlaid with a semi-transparent yellow filter. The text 'ASPIRE' and 'ACHIEVE' is superimposed over the image in a large, white, sans-serif font.

ASPIRE ACHIEVE

POSTGRADUATE GUIDE 2025





CONTENTS

About Nelson Mandela University	4
Our Identity.....	6
Message from the Vice-Chancellor	8
Vision 2030.....	10
Why postgraduate studies.....	11
Research at Nelson Mandela University.....	12
Research Chairs	14
Levels & Types of Postgraduate Studies	16
International students.....	18
Financial matters	19
OUR FACULTIES	
Faculty of Humanities	20
Faculty of Business and Economic Sciences	21
Faculty of Education	22
Faculty of Law	23
Faculty of Engineering, the Built Environment and Technology	24
Faculty of Health Sciences.....	26
Faculty of Science	28
Our Alumni	30
FAQs	32
Mature & Postgraduate Recruitment	35

All reasonable steps have been taken to ensure that the information contained in this guide was accurate at the date of publication. Nelson Mandela University reserves the right to make changes to programme details (e.g. rules, admission requirements etc.) as published in this guide. Prospective students are advised to consult the admissions department prior to applying.

ABOUT

Nelson Mandela University

Dynamic and forward-thinking, Nelson Mandela University is a leader in generating cutting-edge knowledge for a sustainable future. We strive to change the world.

As a socially embedded African university in the service of society, we offer a range of life-changing educational experiences, impactful research and innovation, and transformative engagement. These academic core missions are rooted in and informed by recent milestones in the University's history, such as the 2017 name change to Nelson Mandela University, the Vice-Chancellor's listening campaign, inaugural and Advancing Mandela addresses, and a transversal organisational redesign. The new name signified a change from Nelson Mandela Metropolitan University, which itself was the result of the merging of the PE Technikon, the University of Port Elizabeth and the Port Elizabeth campus of Vista University. The union of these institutions was part of countrywide restructuring of higher education, intended to deliver a more equitable and efficient system to meet the needs of South Africa, the continent, and the world in the 21st century. Founded on more than a century of quality higher education, Nelson Mandela University nurtures innovation,

fosters creativity, embraces technological advancement, and develops people to add value in an evolving world. We offer quality higher education to nearly 32 000 students across seven campuses, making us the largest university in the Eastern and Southern Cape. Today, Nelson Mandela University is a sought-after educational destination in South Africa and the only higher education institution in the world to carry the name of Nelson Rolihlahla Mandela.





OUR IDENTITY

We embrace the Responsibility, and Honour, of embodying the legacy and ethos of the late Tata Nelson Mandela.

As the only university in the world to bear this name, we have been given the opportunity to rebrand and position our institution continentally and globally, while also ushering in a new era of renewed vigour towards meaningful transformation. Over and above our geography as part of a metro, our new identity places greater focus on reflecting the values and spirit of Mandela, the man. Nelson Mandela's lifelong struggle for a non-racial, non-sexist, demographic society, where all citizens are treated with respect and dignity, resonates with the vision we strive to instil in our graduates. Transformation and the need to build social cohesion in addressing social justice and equality are integral to this. Whether they step on to one of our campuses in person or meet us online, we want all stakeholders to experience Mandela's presence intellectually as well as visually through the values driven conduct of our students and staff, our built environment and artworks, and our inclusive institutional culture. This includes the commitment to

developing emergent African scholars and academics who bring a diversity of thought to traditional knowledge systems and paradigms. Through the direction given by our Vision 2030 strategy, Mandela University has reasserted transformative engagement as a core academic mission alongside learning and teaching, research, innovation, and internationalisation.

Message from the **VICE-CHANCELLOR**

Welcome to postgraduate studies at Nelson Mandela University.

We are the only university in the world to carry the name of the iconic statesman Nelson Mandela. Our institutional identity and core academic missions are underpinned by our namesake's legacy, ethos, and values. We position ourselves as an institution in the service of society, primarily through our learning, teaching, research, innovation, internationalisation and engagement.

We take great pride in bearing the iconic name of Nelson Mandela, who transformed South Africa through his unwavering commitment for a more just, and equal society. It is a quest that our new generation University is determined to continue.

Indeed, we have a deep moral responsibility to live the legacy of Nelson Mandela.

Our namesake recognised the importance of education as a force for good, and so we are committed to being a destination of choice for those who are:

- Prospective pioneering change agents for a better world
- Committed to creating jobs in an entrepreneurial economy, and are
- Inspired by a deep need to serve and give back.

The University's Vision 2030 strategy is an articulation of our strategic intentions and aspirations as we seek to embody the Mandela ethos. In so doing, we strive to promote the public good through the expansion of human understanding, to grow the frontiers of knowledge, especially in postgraduate studies, and cultivate socially conscious graduates who make a positive impact on society as responsible global citizens and leaders.



**“ Nelson Mandela
recognised the importance
of education as a force for
good. ”**

We invite you to journey with us as Nelson Mandela University, a dynamic, African university recognised for its leadership in generating cutting edge knowledge for a sustainable future.

We hope to welcome you as part of the Nelson Mandela University family.

**All the best
Prof Sibongile Muthwa
Vice-Chancellor**

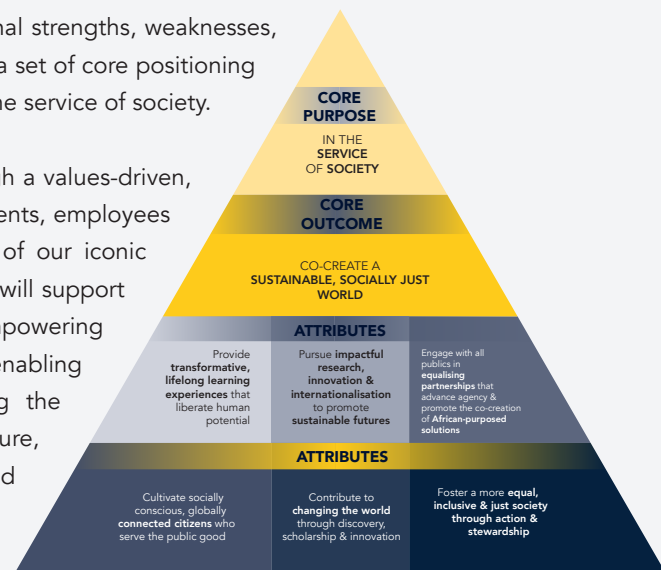
VISION 2030



Through Vision 2030, Mandela University reaffirms its commitment to change the world through life-changing, student-centric educational opportunities, pioneering and impactful research and innovation, and transformative engagement that contribute to a better world. In so doing, the University seeks to promote the public good through cultivating graduates as socially conscious, globally connected citizens, contributing to addressing grand societal challenges through innovative scholarship and discovery. As a centrepiece of Vision 2030, the University will strive to reposition engagement to foster a more equal, inclusive and socially just society by activating equalising partnerships with societal stakeholders that advance the co-creation of African- purposed solutions.

Against the backdrop of a comprehensive assessment of institutional strengths, weaknesses, opportunities and threats, the Vision 2030 Strategy is premised on a set of core positioning messages that seek to take the University boldly into the future in the service of society.

The core academic missions will be supported and enabled through a values-driven, inclusive institutional culture that liberates the full potential of students, employees and communities as we seek to embody the legacy and ethos of our iconic namesake, Nelson Mandela. Further critical strategic enablers that will support our intentions include ethical governance and leadership, empowering employees and embracing the future world of work, creating an enabling environment for innovation, accelerating digitalisation, ensuring the optimal utilisation of modernised and flexibly designed infrastructure, and deepening our commitment to long-term sustainability and responsible resource stewardship. An overview of the overarching Vision 2030 strategic framework is outlined below.





WHY POSTGRADUATE STUDIES

at Nelson Mandela University?

At Nelson Mandela University we advocate the importance of life-long learning – an education for life. As a leading institution recognised nationally and internationally, and with partners in the private as well as in the public sectors, the institution has distinguished itself as an institution that will not only put you in touch with the latest trends and developments in your career but will help you reach your full potential and assist in making your dreams and aspirations become a reality.

Whether you are pursuing an academic or professional career, aiming for success in the private or public sector, or just want to add value to your personal development, postgraduate studies offer the opportunity to deepen your understanding and sharpen your skills, to specialise and to focus on what interests you. A

relevant postgraduate qualification is becoming increasingly valuable in the employment market. International trends indicate that more graduates are competing for fewer jobs. Job opportunities in many sectors of the economy have become highly competitive, and a postgraduate qualification sets you apart from the rest. Supported by career experience, a relevant postgraduate qualification gives you the competitive edge and will surely contribute to promotional opportunities in your career.

Distinguish yourself by not only pushing the boundaries of your current body of knowledge, but also by refining your intellectual capacity. Enroll for a postgraduate programme and become part of the intellectual stronghold that contributes to the global accumulation and application of knowledge.

RESEARCH

at Nelson Mandela University

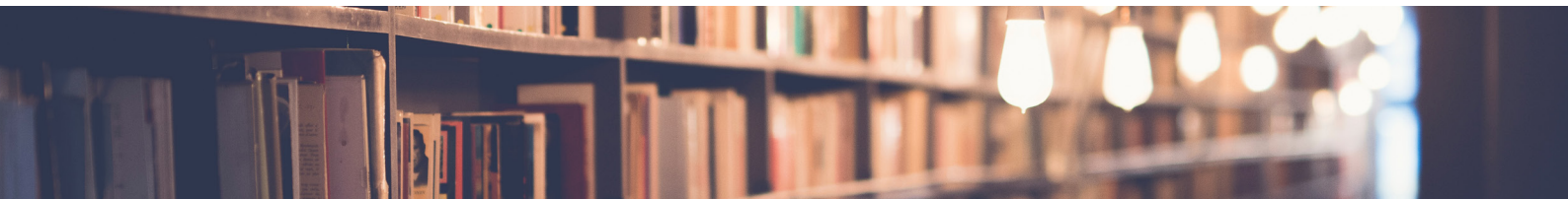
It is a strategic priority for Nelson Mandela University to nurture and grow its research culture. The University aims to ensure the relevance of its programmes to the needs of the real world and therefore offers prospective postgraduate students the opportunity to undertake applied research that will contribute to finding practical solutions relevant to industry and developing new applications for existing knowledge.

Our academic faculties and departments, together with the Department of Research Management, are committed to supporting and developing postgraduate students who can successfully produce research of a high quality. The Nelson Mandela University Research Entities are flagship structures that position and brand the University's research activities nationally and globally. They are key drivers of the university's vision and strategy, with their activities spanning

and integrating the core University missions.

They are critical in the University's pursuit of impactful research, innovation and internationalisation to promote sustainable futures.

The key positioning messages of the University find expression in the institutional Vision 2030 and include firmly establishing the institution as a University that advances social justice in the service of society; repositioning and changing the face of engagement to respond to the key challenges of our time and space; revitalisation of the Humanities; being deliberate about pursuing transdisciplinary perspectives in our scholarly endeavours; expanding our African footprint; and growing and nurturing our institutional research themes as well as continuing to strengthen the University research outputs.



Nelson Mandela University Research Themes that are anchored by the work of the research entities are:



Ocean and Coastal Sciences



Social Justice and Democracy



Environmental Stewardship and Sustainable Livelihoods



Innovation and the Digital Economy



Origins, Culture, Heritage and Memory



Humanising Pedagogies

Nelson Mandela University has 29 research entities of varying sizes and disciplines. Working with academic departments, research chairs and faculties, the entities contribute significantly to the areas of postgraduate training, mentoring of postdoctoral and research fellows, research and engagement.

Follow link for more information: <https://postgraduate.mandela.ac.za/Research-@Mandela-University/Research-entities#>



RESEARCH

Chairs

Research on a postgraduate level gives you the opportunity to contribute substantially to the development of new techniques, knowledge, ideas and approaches that can impact on a discipline or scientific field, as well as on your profession and society in general.

Our research strategy recognises the importance of critical inquiry, as well as the need to address societal challenges in terms of wealth creation and improving quality of life for people. It acknowledges the unique opportunity created by the merger in bringing two different academic cultures together.

Nelson Mandela University also hosts the following research chairs:

- DSI-NRF SARCHI Chair in Law of the Sea and Development in Africa (Prof Patrick Vrancken)
- DSI-NRF SARCHI Chair in Marine Spatial Planning (Prof Mandy Lombard)
- DSI-NRF SARCHI Chair in Shallow Water Ecosystems (Prof Janine Adams)
- DSI-NRF SARCHI Chair in Ocean Cultures and Heritage (Prof Rose Boswell)
- Joint DSI-NRF SARCHI Chair in Ocean Science and Food Security (Prof Mike Roberts), joint appointment with Southampton University
- DSI-NRF SARCHI Chair in Microfluidic Bio-Chemical Processing (Prof Paul Watts)
- DSI-NRF SARCHI Chair in Identities and Social Cohesion in Africa (Prof Andrea Hurst)
- Joint DSI-NRF SARCHI Chair in Community, Adult and Worker Education (Prof Salim Vally, based at the University of Johannesburg)



- Chair for Critical Studies in Higher Education Transformation (Prof Andre Keet)
- Chair for Youth Unemployment, Employability and Empowerment (Dr Lesley Powell)
- DSI-NRF SARCHI Chair in African Feminist Imagination (Prof Pumla Dineo Gqola)
- merSETA Chair in Engineering Development (Karl du Preez)
- UNESCO Chair in Physical Activity and Health in Educational Settings, with the University of Basel (Prof Cheryl Walter)
- AIDC-EC Chair in Automotive Engineering (Martin Sanne)
- Chair in Human Settlements (Prof Sijekula Mbanga)
- ISUZU Chair in Mechatronics (Prof Igor Gorlach)
- DSI Chair in Nanomedicine (Dr Steven Mufamadi)

Find more information here <https://research.mandela.ac.za/Research-Chairs>

LEVELS & TYPES

of Postgraduate Studies

Nelson Mandela University's seven faculties offer a wide range of postgraduate research and coursework study options. Coursework programmes are structured to suit the needs of working people, while research programmes allow you to delve deeper into a specific field of interest. The institution offers opportunities for postgraduate studies across the full spectrum of qualification types.

Postgraduate qualifications are structured as follows:

Postgraduate certificate or diploma

A postgraduate Certificate or diploma provides an opportunity to undertake advanced study that will strengthen and deepen your knowledge in a particular discipline or profession. The primary purpose of the qualification is to enable working professionals to undertake advanced reflection and development by means of a systematic survey of current thinking, practice and research methods in an area of specialisation.

Duration of study: one year of full-time study

Bachelor honours degree

A bachelor honours degree is the initial postgraduate specialisation qualification, preparing students for research-based postgraduate study. This qualification typically follows a bachelor's degree, and

serves to consolidate and deepen the student's experience in a particular discipline while also developing research capacity in the methodology and techniques of that discipline. It demands a high level of theoretical engagement and intellectual independence and in some cases carries recognition by an appropriate professional or statutory body. While not all honours programmes at Nelson Mandela University involve conducting research, all of them include a research methodology course as part of the coursework component. Completion of a bachelor honours degree meets the minimum entry requirement of admission to a cognate Master's degree.

Duration of study: one year of full-time study

Master's degree

A master's degree may be earned in one of two ways:

(i) by completing a single advanced research project, culminating in the production and

acceptance of a dissertation, or (ii) by successfully completing a coursework programme and a smaller applied research component. The admission requirement is a relevant honours degree. Professional or advanced careerfocused bachelor's degrees, such as BEng, BPharm, BCur, BPsych and BTech, may also be recognised as the minimum entry requirement to a related master's degree programme.

Duration of study: Coursework master's degree: one year full-time.

Research master's degree: one year to four years.

Doctoral degree

A doctoral degree requires a candidate to undertake research at the most advanced academic level, culminating in the production of a thesis. The research outcome has to make a significant and original academic contribution to a discipline or field. The degree may be earned through pure discipline based on multi-disciplinary or applied research. The degree may include a coursework component as preparation to the research but does not contribute to the credit value of the qualification.

Duration of study: two to six years





INTERNATIONAL

Students

Nelson Mandela University is a dynamic African institution located at the foot of the continent. As the only university named after Nelson Mandela, we pride ourselves on providing a stimulating, richly diverse environment that shapes you for the world of tomorrow and enables you to reach your full potential. Together with a top quality, affordable education, you also get to live in a beautiful country, learn about different cultures, explore the land and make unforgettable memories with new friends.

Whether you are pursuing an academic or professional career, aiming for success in the private or public sector, or just want to add value to your personal development, postgraduate studies offer the opportunity to deepen your understanding and to specialize and focus on what interests you.

Find more information here: <https://international.mandela.ac.za/>

FINANCIAL

Matters

Application fees: No application fees for South-African applicants.
International student application fee.....R500

Enrolment fees: Enrolment fees are debited to students' accounts and are payable every year. Enrolment fees are not refundable and a student is liable for the fee in the event of a cancellation.

Registration fees: A registration fee is the first advance payment of tuition fees. This set deposit is paid upon registration, while the balance is normally due by the end of April. First-time candidates who register after April are required to pay both the registration and tuition fees upon registration.

Tuition fees: These fees vary according to qualifications and programmes. Information can be downloaded from mandela.ac.za

Accommodation fees: Residence fees are paid per semester. They cover the academic semesters and exclude all vacations. However, postgraduate students living in the Postgraduate Village on South Campus, Summerstrand, may, if for research purposes, apply for permission to stay in residence for 12 months. Please contact Student Housing Management on 041 504 3941.



Postgraduate student funding

The Office of Research Development

The Directorate contributes to an enabling environment for research by supporting emerging researchers (which includes postdoctoral and research fellows), facilitating all aspects of postgraduate student funding and offering development programmes for staff and postgraduate students. Through the Unit for statistical consultation, it offers training and consultation for statistical needs of researchers. It also manages ethics processes at the institution.

Follow this link <https://rd.mandela.ac.za/#>

OUR FACULTIES

Nelson Mandela University has more than 500 study programmes in seven excellent faculties that help our students achieve academic excellence. We are well-known for art and design, building, chartered accounting, engineering, health and environmental sciences, and information technology.

FACULTY OF HUMANITIES

We exist as a pulsating tapestry of vitality, fuelled by boundless imagination and an unwavering commitment to active societal participation. The Faculty is a socially engaged space, in which a diversity of interesting and valuable qualifications are offered in three interdisciplinary schools.

Explore your potential in our vibrant and imaginative qualifications in our schools of:

- School of Governmental and Social Sciences
- School of Language Media and Communication
- School of Visual and Performing Arts

As you step onto the path of postgraduate exploration within our realm, you will discover:

- Rich supervisory experience
- Industry-relevant skills
- Top lecturers and professors

We adopt a human-centred pedagogy aimed at aiding you in thoughtfully and effectively understanding the intricate nature of the 21st-century life. Our alumni are prepared to address ethical, social, and political dilemmas in an ever-evolving South Africa and the global community.

Faculty contact: Honours, master's and doctoral programmes: 041 504 2855 / 2802 / 3152 / 3478

Faculty Postgraduate Consultant: PG-Humanities@mandela.ac.za

For more information visit: <https://humanities.mandela.ac.za/>

FACULTY OF BUSINESS AND ECONOMIC SCIENCES

The Faculty of Business and Economic Sciences is the largest of the seven faculties in the University and is active on three campuses: South and Second Avenue in Gqeberha, and George Campus. The faculty caters for a diverse range of commerce and business qualifications and professions.

The research portfolio reflects the diversity of the different departments and disciplines. Postgraduate students and staff engage in various research projects within the business environment and local communities with the aim of promoting positive social and economic development.

Our top-tier courses and qualifications are some of the most extensive available anywhere in the world.

Our focus:

A diverse range of business-related study opportunities puts you in control.

- general, formative programmes
- strong, career-oriented programmes
- emphasis on business community service and engagement
- emphasis on economic sciences
- commitment to community

Flexibility

- Inclusive programme mix
- Wide choice for students
- Opportunity to jump between programmes while retaining credits
- Full qualification spectrum
- Start-to-finish qualifications: from undergraduate diplomas to doctoral degrees

We have five Schools:

- Business School
- School for Industrial Psychology and Human Resources
- School of Accounting
- School of Economics, Development & Tourism
- School of Management Sciences

Faculty contacts: Honours, master's and doctoral programmes: 041 504 2248 / 2120 / 3741 / 3802

Faculty Postgraduate Consultant: PG-BES@mandela.ac.za

For more information visit: <https://business.mandela.ac.za/>

FACULTY OF EDUCATION

Beyond producing qualified educators, our faculty nurtures graduates who are enthusiastic about making practical, people-centered changes in the world. You are the foundation of South Africa's future – and we provide the foundation to help you succeed.

- Training for operating in diverse environments
- Reflective and practical opportunities for qualified professionals to improve their skills

A range of postgraduate programmes is geared towards the needs of working teachers and other education professionals to advance their knowledge and educational leadership skills.

Together, we change the world, one person at a time.

Our vision

Education is our number one priority – particularly in the Eastern Cape.

- General teacher education
- Further development of practising teachers
- Focus on meeting educational needs
- Focus on addressing provincial education priorities

Our expertise

Beyond our gold standard teaching qualifications, our value-added student services include:

- Pre-service teacher education (helping student teachers to teach effectively)
- In-service teacher education
- Programmes to build capacity in priority areas

- Programmes aimed at assisting teachers in priority areas
- Upgrading qualifications for practising teachers

The faculty has five schools:

- Primary School Education
- Foundation Phase
- Primary School Education
- Intermediate Phase Secondary School Education
- Post Schooling Postgraduate Education

Faculty Contacts: 041 504 2125

Faculty Postgraduate Consultant: PG-Education@mandela.ac.za

For more information visit: <https://education.mandela.ac.za/>

FACULTY OF LAW

We teach law within an exciting, future-focused framework:

- Leadership in generating cutting-edge knowledge
- Commitment to a sustainable future
- Holding steady our vision of being a dynamic, African university

Endless possibilities

Legal expertise extends beyond mere legislation. Our faculty forms a close-knit community consisting of esteemed academic staff, dedicated support teams, and aspiring law students. Together, we create a high-quality educational journey for everyone who becomes a part of our faculty family.

Solid foundation

Our grasp of the law remains up-to-date,

pertinent, and consistently centred around meaningful and continuous engagement with real-world legal professionals.

Students apply their minds - and skills - to real world scenarios beyond theory.

- High quality law qualifications
- Independent contributions to the legal landscape
- Vibrant, determined students and staff
- Employment and entrepreneurship guidance
- Bridging the gap between legal expertise and societal challenges

The faculty is generating a growing collection of published research across various legal domains. A number of colleagues are in the final stages of doctoral studies, and we also take pride in housing the esteemed South African Research Chairs Initiative (SARChI) Chair in the Law of the Sea, along with two NRF-rated researchers.

Our departments:

- Public Law
- Mercantile Law
- Private Law
- Criminal and Procedural Law

Faculty contact: 041 504 2474

Faculty Postgraduate Consultant: PG-Law@mandela.ac.za

For more information visit: <https://law.mandela.ac.za/>

FACULTY OF ENGINEERING, THE BUILT ENVIRONMENT AND TECHNOLOGY

The Faculty of Engineering, the Built Environment and Technology (EBET) offers a range of quality programmes including higher certificates, diplomas, advanced diplomas, and bachelor's degrees. It also offers postgraduate programmes such as: postgraduate diplomas, honours, master's, and doctoral degrees in a broad range of disciplines. It combines top facilities, state-of-the-art technology, and stimulating training to nurture and inspire responsible and responsive graduates.

- Top facilities
- State-of-the-art technology
- Stimulating training
- We produce highly sought-after professionals in these 21st-century fields:
- Civil engineering
- Electrical engineering
- Industrial/mechanical engineering
- Mechatronics
- Information technology
- Quality and operations management
- Quantity surveying
- Construction management

Own your world

Career opportunities are virtually endless in these fields of study and you will be prepared with world-class skills and a solid global reach.

- All applicable programmes accredited by relevant professional bodies
- Verifiable quality of education
- Internationally accepted qualifications

Cutting-edge research

Our research arm is internationally recognised and contributing real-time solution in:

- Friction stir-welding
- Manufacturing technology
- Automotive manufacturing

- Information security
- Telecommunications
- Multimedia
- Construction health and safety

Our Schools

- School of Architecture
- School of Engineering
- School of Information Technology
- School of the Built Environment and Civil Engineering

Our faculty builds dreams, one measured step at a time.

Faculty contact: Engineering: 041 504 3447

Built Environment: 041 504 3480

Information and Communication Technology: 041 504 3660

Faculty Postgraduate Consultant: PG-EBET@mandela.ac.za

For more information visit: <https://ebet.mandela.ac.za/>

For more information visit: <https://business.mandela.ac.za/>

FACULTY OF HEALTH SCIENCES

At Mandela University, we emphasise the social dimension of healthcare just as much as we prioritise accomplishing the tasks at hand. With around 4,000 students spread across ten departments, our faculty holds a substantial size. These higher numbers translate to a broader impact in the areas where our presence is most crucial.

Our alumni transcend being mere health practitioners - they are champions of the community.

Our Interprofessional Education (IPE) project runs across all departments:

- Transforming health sciences education to support equity in health
- Integrated learning, research and health service delivery
- Commitment to serving communities in need

A heart-centred approach

Staff and students embrace the rearticulation and Africanisation of our programmes.

What does this mean?

- Health practitioners who are 'fit-for-purpose' in serving their communities
- Restructuring traditional student training platforms
- Health practitioners trained in settings where they are needed most – primary health care environments

Together, we are making a difference in people's lives, one well-trained graduate at a time.

As Madiba famously said: "The most important thing is that no single person can do everything."

Our Schools

- School of Behavioural and Lifestyle Sciences
- School of Clinical Care and Medicinal Sciences
- School of Medicine

Faculty contact: : 041 504 2121 / 2956 / 2957

Faculty Postgraduate Consultant: PGHS@mandela.ac.za

For more information visit: <https://health.mandela.ac.za/>



FACULTY OF SCIENCES

“Crucial to science education is hands-on involvement: showing, not just telling; real experiments and field trips and not just “virtual reality”.

– Martin Rees

The faculty's vision is to be a world-class engaged and transdisciplinary African Faculty of Science that responds to socio-economic and environmental challenges. Research is centred around fundamental blue-sky and applied research to contribute towards the United Nations Sustainable Development Goals. The Faculty of Science is at the cutting-edge of research, technology and innovation, working with industry to create and improve products and processes, and committed to ensuring that our natural environment is preserved for both present and future generations.

For science to be relevant, it must make the world a better place.

What we stand for:

- We are a world-class, engaged and transdisciplinary African faculty.
- We respond to socio-economic and environmental challenges
- We offer a diverse range of life-changing, pure and applied science-based learning, teaching, research, training, innovation, engagement and transformational experiences
- We demand excellent graduate attributes for a sustainable future

A Faculty priority is for students to help change local communities, and the world, in positive ways:

- Hunt down breakthroughs in new products, processes, technologies
- Investigate conservation and sustainable development.
- Help protect and improve our world for future generations.
- Engage with 21st-century technology to stimulate experimentation and innovation.
- Partner with industry, government and society to create and improve products and processes.

Faculty contact: 041 504 2249

Faculty Postgraduate Consultant: PG-Science@mandela.ac.za

For more information visit: <https://science.mandela.ac.za/>

Our Schools

- School of Biomolecular and Chemical Sciences
- School of Computer Science, Mathematics, Physics and Statistics
- School of Environmental Sciences
- School of Natural Resource Management

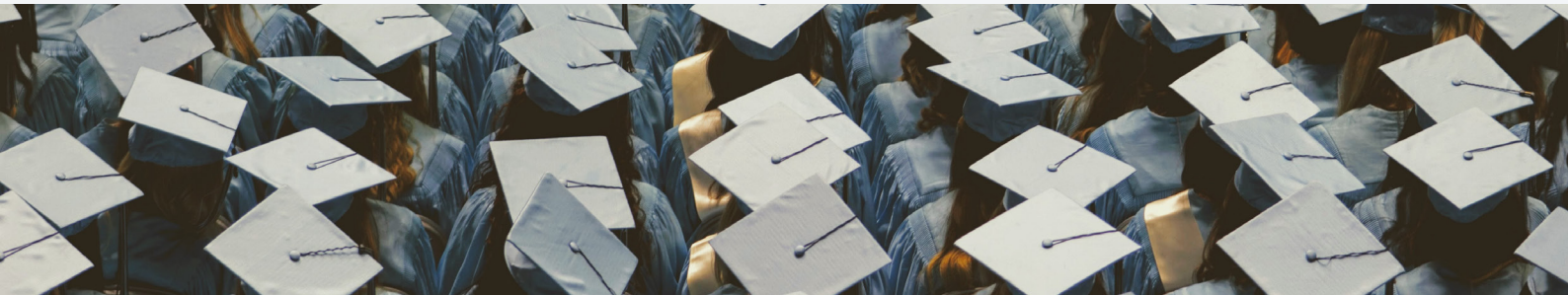


OUR ALUMNI

The Alumni Association engages with more than 127 757 graduates spread around South Africa and Internationally, from all our founding institutions. By the end of April 2023, the University had awarded a total of 178 551 qualifications. The difference between the number of graduates and the number of qualifications, shows how many of our graduates have more than one qualification. The Alumni Association is an important role player to promote the interests, image and reputation of the University, with alumni representing the global footprint of the University through their individual and collective efforts. Past students are encouraged to stay in touch and, in return, are kept up to date on what is happening at their alma mater. Regular alumni events are hosted throughout South Africa and internationally as part of the University's goal to share in the lifelong learning journey of its graduates.

Notable alumni include internationally renowned

fashion designers Laduma Ngxokolo and Jenni Button, motor industry executives Johan de Nysschen and David Powels, sport personalities Russell Domingo and Dumisani Chauke, and entrepreneurs and industrialists Allan Knott-Craig Junior and Quinton Uren. Nelson Mandela University and its predecessor institutions have conferred 153 honorary doctorates since 1968, recognising distinguished contributions to a specific field or to society in general. Alumni benefits and services include a Nelson Mandela University application fee exemption for themselves and their children, discounted library membership and newsletters. The Alumni Association has chapters in Nelson Mandela Bay, East London and the Southern Cape as well as in the UK and East Africa. The University Shop is a self-sustaining entity to retail University branded items including corporate, sport and leisure wear, conference items, stationery, and gifts. It has an online shopping facility.



NELSON MANDELA
UNIVERSITY

#MandelaUniGrad





FAQ'S

Where can I find more information on postgraduate bursaries?

Nelson Mandela University has a number of bursaries and scholarships available for academically deserving students. A comprehensive overview of this information can be obtained from the Financial Aid Office (for honours degree programmes) and the Department of Research Development (for master's, doctoral and post-doctoral research).

How do I apply for postgraduate studies?

If you are currently studying at Nelson Mandela University, you may just have to complete the application form for postgraduate studies(U.24) along with any other documentation deemed necessary by the faculty. Candidates not previously registered at the institution must complete an application using the online route.

How do I apply?

Applications are submitted online at www.mandela.ac.za/apply

Are there deadlines for applications?

Yes, but they vary. The closing date for applications and registration for honours programmes however is the same as for undergraduate programmes – *early August of each year.*

Closing dates for application and registration for coursework master's degree programmes differ

from programme to programme and may be followed by interviews and selection processes. Consult the relevant faculty manager as listed in faculty pages. First-time postgraduate research students (master's and doctoral) are permitted to register throughout the year, although registration for continuing students must take place before 1 March.

What is RPL and how is it applied at Nelson Mandela University?

Recognition of Prior Learning (RPL) has particular reference to prospective mature students who seek acknowledgement and assessment of their skills, knowledge and competencies acquired during formal and informal learning situations, and wish to gain admission to a formal university programme.

Each faculty reserves the right to set their own criteria in addition to those specified by Senate, which is responsible for academic governance.

The admission of postgraduate research candidates based on RPL guidelines is guided by one or more of the following:

- » Relevant existing academic qualifications
- » Previous research qualifications
- » Previous professional experience in an area relevant to the proposed field of study
- » Existing language proficiency in terms of oral and written communication skills
- » Candidates who apply for admission via RPL should submit a portfolio of evidence to demonstrate their competence.

Mature applicants, who would like guidance

on the acceptability of their qualifications and experience or on how to qualify for entry into our programmes, should first contact the programme leader or faculty where they wish to study. These enquiries should occur at least six months before the commencement of their studies.

Is there accommodation available for postgraduate students?

The University has accommodation especially earmarked for postgraduates on campus and has useful contacts for off-campus digs all within easy walking distance in the neighbouring beachfront suburbs. However, since Gqeberha is a city with a small-town ambience, wherever you live, you are not too far from anything – the University, the shops or the beach.

What type of support exists for students?

We understand the pressure of postgraduate studies and have a number of support services to assist you in reaching your academic goals. The Department of Research Management focuses on the mentoring and development of new and emerging researchers by means of workshops in fields such as research methodology, budgets and project planning. This service is supplemented by similar training provided by academic departments and faculties.

The Writing Centre offers a professional service to all students in terms of writing reports, assignments, etc. It also provides candidates

with a list of appropriate editors who offer their services at a fee.

Library and Information Services offer access to many methods of retrieving information. Professional staff will assist you in developing your knowledge via books, catalogues, online databases, newspapers, journals and e-books. The Library and Information Services practice inter-library lending and offers postgraduate training in various aspects of information retrieval.

Information and Communication Technology Services can assist postgraduate students to obtain access to various computing facilities. ICT services can also help convert your final research document into the required format for submission to the Examinations Office. Computer literacy classes are also offered.

What type of services/resources are available to me?

Graduate Placement: offers help in the job market with its extensive placement network. Apart from its annual Careers Fair, where more than 80 different employers visit the institution, Nelson Mandela University has an office dedicated to assisting students with internships and permanent employment.

Alumni network: Nelson Mandela University likes to keep in touch with its graduates and does so through its Alumni Office. There are more than 95 000 Nelson Mandela University

Alumni spread throughout the world. Regular Alumni events are hosted in South Africa and overseas as part of the University's goal to share in the lifelong journey of its graduates.

What is the difference between coursework and research programmes?

Postgraduate coursework programmes usually involve student attendance at lectures, classes or seminars and may, depending on the level of qualification, require a minor thesis. These qualifications are awarded by following a set stream of core units and electives.

Research qualifications are awarded following the completion of a major thesis, involving original research, under the supervision of a senior academic. When undertaking research programmes, learning is undertaken independently and there are no lectures or classes.

What is a treatise?

A treatise is a formal and systematic written discourse on some subject, generally longer and of greater depth than an essay, and more concerned with investigating or exposing the principles of the subject.

What is a thesis/dissertation?

A dissertation or thesis is a document submitted in support of candidature for an academic degree or professional qualification presenting the author's research and findings.

MATURE & POSTGRADUATE

Recruitment

The main purpose of this office is to provide advice and guidance on suitable study programmes and to put you in contact with the right people – be it with a Faculty Academic Administration Manager, programme coordinator, academic expert or one of our support services.

We are also available to visit workplaces, conferences, community outreach events and groups to discuss opportunities in higher education at Nelson Mandela University.

Contact us and let us assist you on your journey.

Our research strategy recognises the importance of critical inquiry, as well as the need to address societal challenges in terms of wealth creation and improving quality of life for people. It acknowledges the unique opportunity created by the merger in bringing two different academic cultures together.

Mr Andrew Kock

Senior Marketing Practitioner: Postgraduate &
Mature Student Markets

Email: andrew.kock@mandela.ac.za /
postgrad@mandela.ac.za



Change the World

PO Box 77000, Nelson Mandela University, Gqeberha, 6031

T +27 41 504 1111 (Gqeberha) **T** +27 44 801 5111 (George)

E info@mandela.ac.za

